

# The Afton

## RAMBLER FLOOR PLAN

**JP Brooks**  
BUILDERS



**3 - 4**  
Bedrooms



**2 - 3**  
Bathrooms



**1,411 - 2,500**  
Square Feet



**3**  
Car Garage

JP Brooks presents the Afton floor plan! Features include a front porch, three bedrooms on the main level, a spacious kitchen with a center island and attached dining area, living room with vaulted ceilings and an optional gas fireplace, a primary suite on the main level with a large walk-in closet, optional vaulted ceiling, and an optional luxury bathroom upgrade.

The lower level can be finished to include a spacious family room, a fourth bedroom, and a 3/4 bath for an additional 1,011 square feet.

**JP Brooks**  
BUILDERS

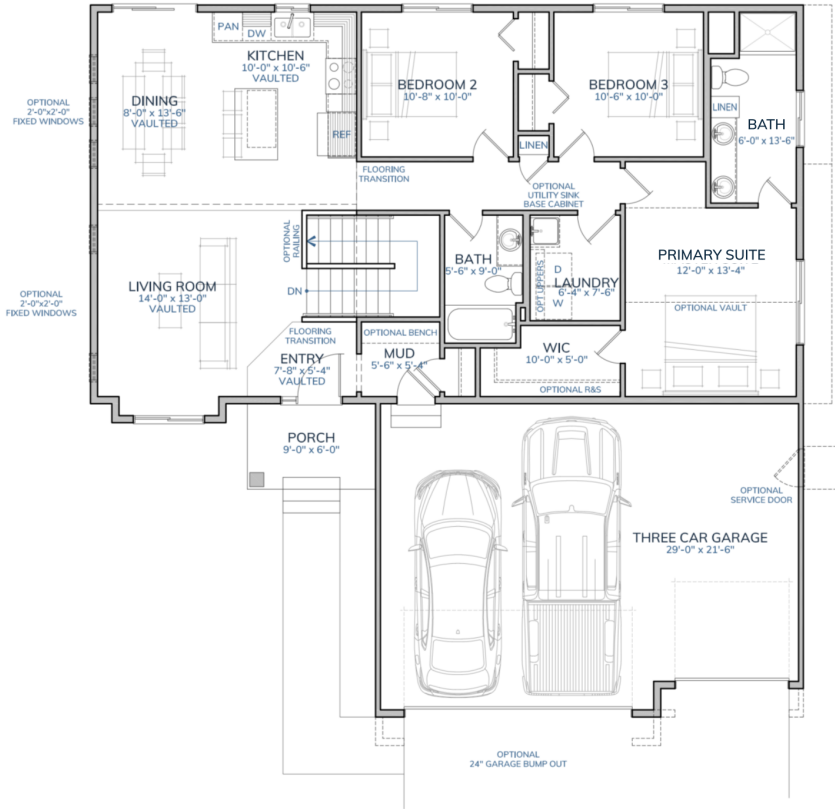
 **BATC**  
BUILDERS ASSOCIATION  
OF THE TWIN CITIES



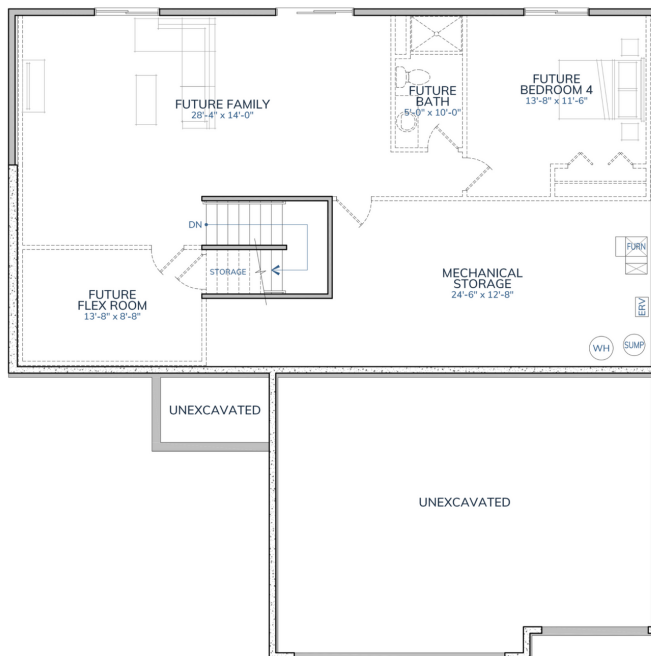
[www.jpbrooks.com](http://www.jpbrooks.com) | (763) 645-5980

## Main Level

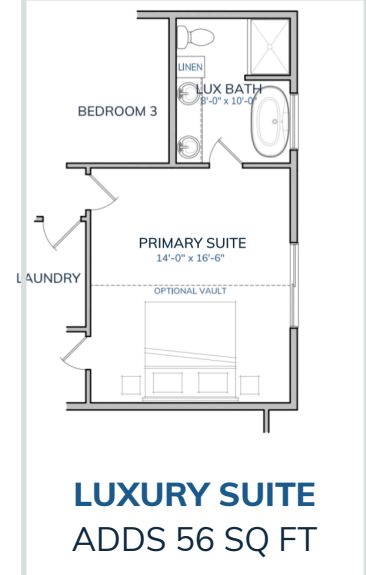
1,411 FINISHED SQ FT



FOUNDATION OPTIONS  
WALKOUT // LOOKOUT // FULL  
DEPENDENT ON LOT AND GRADING



**LUXURY BATH**  
ADDS 22 SQ FT



**LUXURY SUITE**  
ADDS 56 SQ FT

**Lower Level**  
1,011 FINISHED SQ FT

JP Brooks Builders reserves the right to change plans without any notice.