

# The Elmwood

## THREE LEVEL SPLIT FLOOR PLAN

**JP Brooks**  
BUILDERS



**3 - 5**  
Bedrooms



**2 - 3**  
Bathrooms



**1,471 - 2,394**  
Square Feet



**2**  
Car Garage

The Elmwood three level split floor plan offers 1,040 square feet on the main level with a spacious kitchen and center island, stainless steel appliances, two bedrooms, laundry, vaulted ceilings, and an open layout on the main level that's perfect for entertaining friends and family!

The spacious primary suite is located on the third level and has a walk-in closet, private full bathroom with a double vanity, and a sitting area.

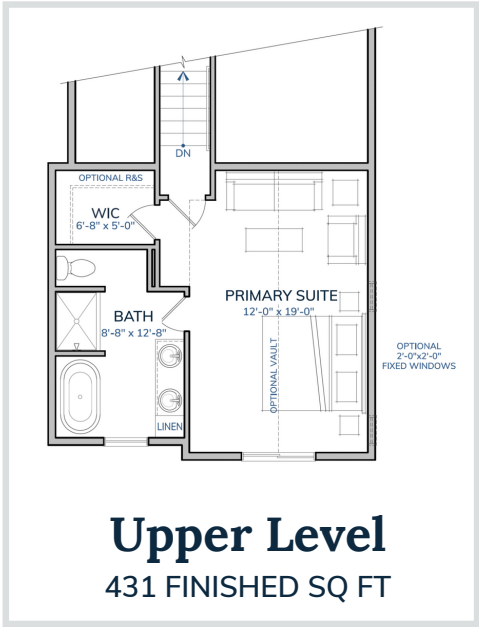
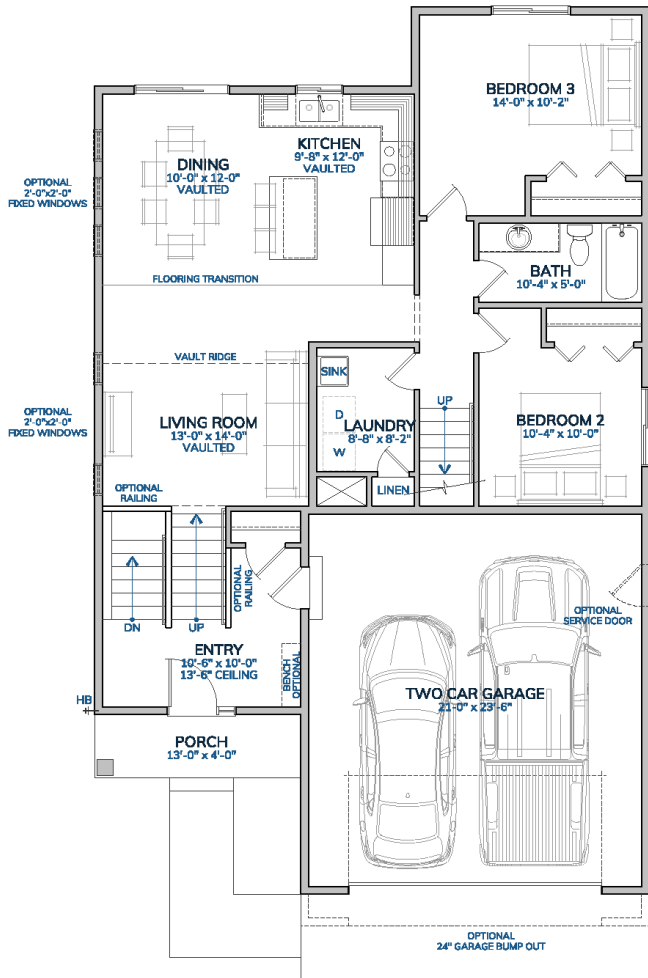
The lower level can be finished to include a family room, two additional bedrooms and a bathroom for an additional 923 square feet!

**JP Brooks**  
BUILDERS

 **BATC**  
BUILDERS ASSOCIATION  
OF THE TWIN CITIES

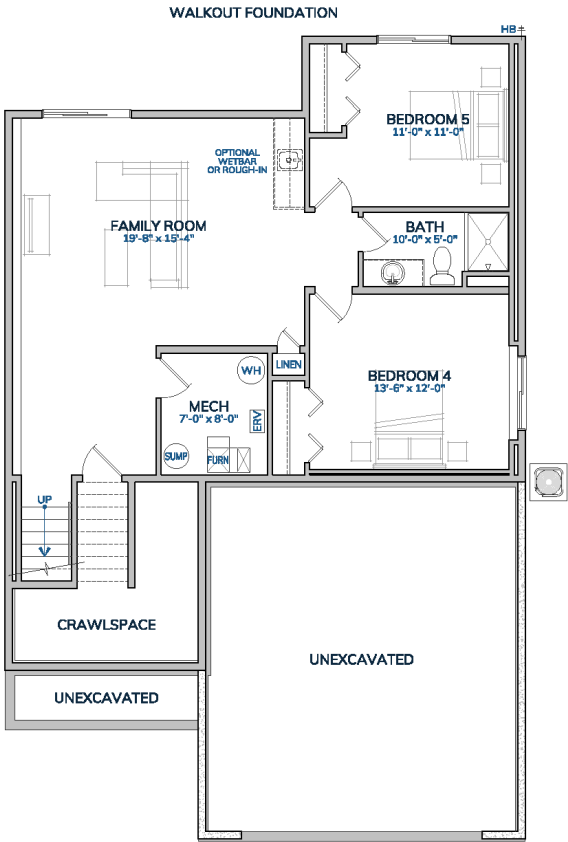


[www.jpbrooks.com](http://www.jpbrooks.com) | (763) 645-5980



## Lower Level

923 FINISHED SQ FT



JP Brooks Builders reserves the right to change plans without any notice.