

The Linden

FOUR LEVEL SPLIT FLOOR PLAN

JP Brooks
BUILDERS



3 - 5
Bedrooms



2 - 3
Bathrooms



1,467 - 2,540
Square Feet



3
Car Garage

The Linden four level split floor plan offers a spacious kitchen with a center island, stainless steel appliances, an attached dining room, vaulted ceilings, and an open layout on the main level, perfect for entertaining friends and family! The spacious primary bedroom has a walk-in closet, a private bathroom, and is located down the hall from the two additional bedrooms. The third level can be finished with an additional bedroom, bathroom, and family room for an additional 785 sq ft. The fourth level can be finished to include a 5th bedroom for an additional 264 sq ft.

JP Brooks
BUILDERS

 **BATC**
BUILDERS ASSOCIATION
OF THE TWIN CITIES

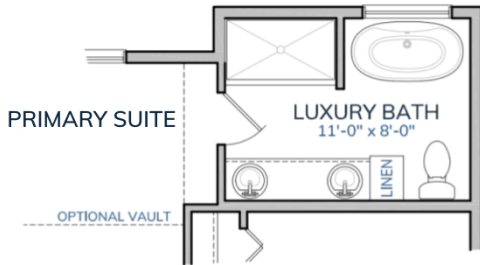


www.jpbrooks.com | (763) 645-5980

Main Level

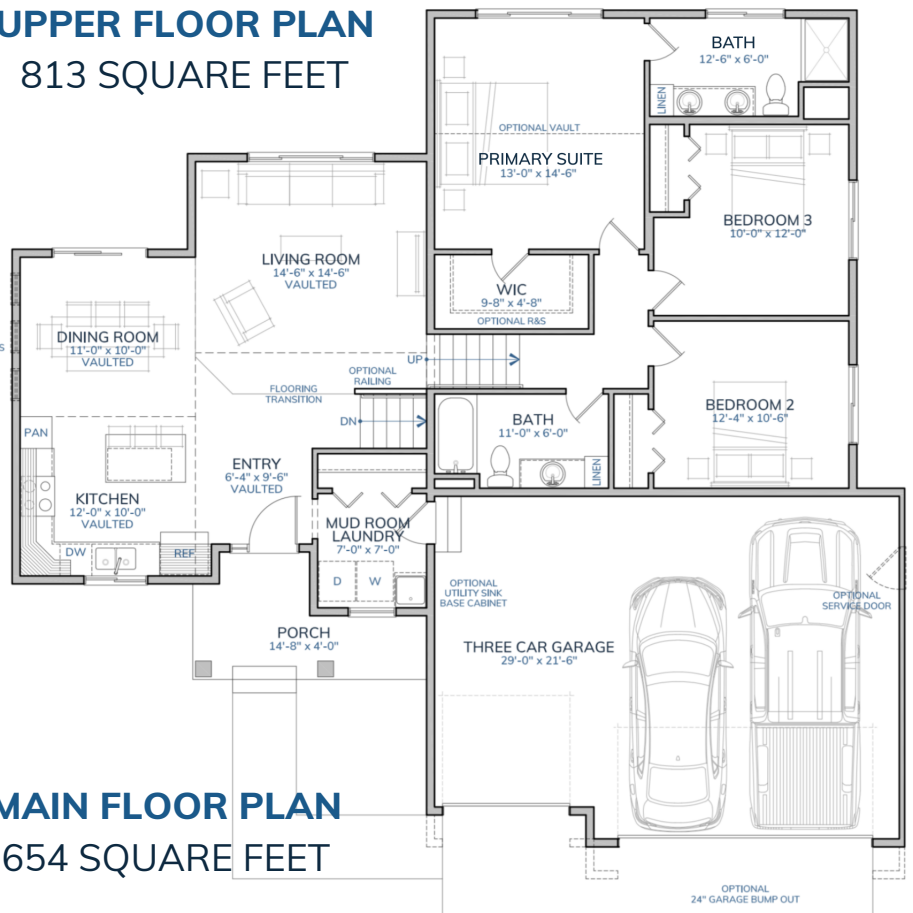
UPPER FLOOR PLAN

813 SQUARE FEET



LUXURY SUITE

ADDS 24 SQ FT



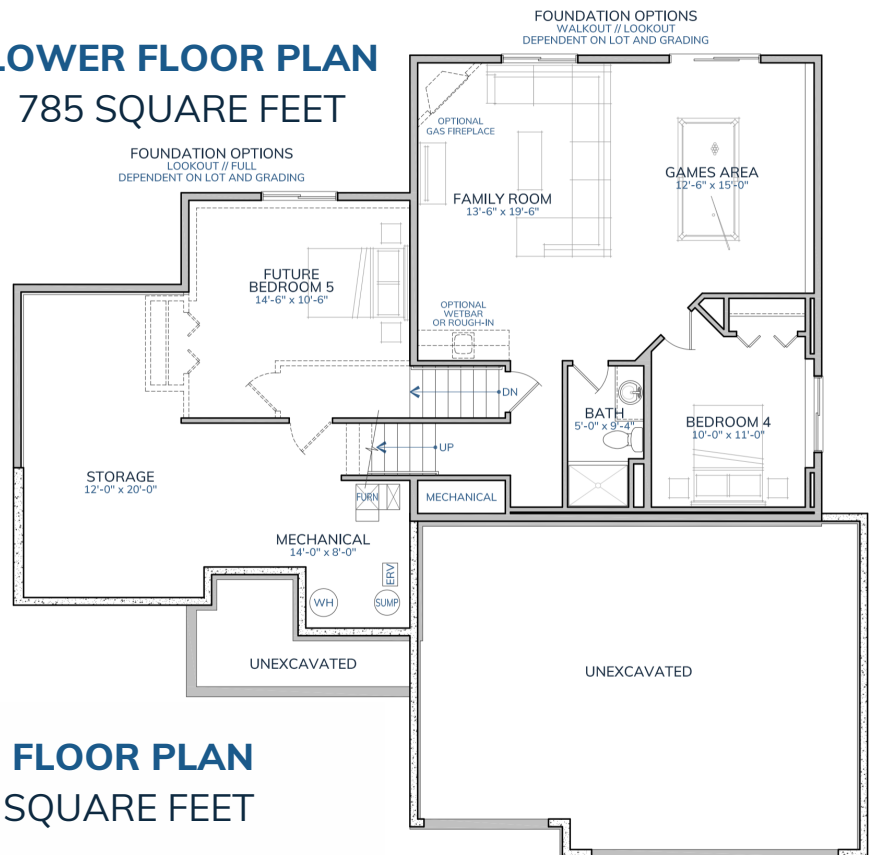
MAIN FLOOR PLAN

654 SQUARE FEET

Lower Level

LOWER FLOOR PLAN

785 SQUARE FEET



4TH FLOOR PLAN

264 SQUARE FEET

JP Brooks Builders reserves the right to change plans without any notice.